

CMC Metals Focused on
Exploration and
Short Term Development
of Precious Metal Projects

Caution Regarding Forward Looking Statements

Certain statements included in this presentation are forward-looking statements within the meaning of Canadian securities laws, including statements regarding the Silver Hart and Logjam properties, as well as the Bishop Mill, Claims and Land: Statements pertaining to the ability of CMC Metals Ltd. ("CMC") to acquire additional joint venture concessions with potential resources; the potential to develop resources and then further develop reserves; the anticipated economic potential of the concession; the availability of capital and finance for CMC to execute its joint venture commitments and strategy going forward.

Forward-looking statements are based on estimates and assumptions made by CMC in light of its experience and perception of current conditions and expected future developments, as well as other factors that CMC believes are appropriate in the circumstances. Many factors could cause CMC's results, performance or achievements to differ materially from those expressed or implied by the forward looking statements, including: discrepancies between actual and estimated results from exploration and development and operating risks, dependence on early exploration stage concessions; uninsurable risks; competition; regulatory restrictions, including environmental regulatory restrictions and liability; currency fluctuations; defective title to mineral claims or property and dependence on key employees. Persons reviewing this presentation are cautioned not to place undue reliance on forward-looking statements due to inherent uncertainty therein. CMC disclaims any intention or obligation to update or revise any forward-looking statements, whether as a result of new information, future events or otherwise, except as required by law. This presentation is for distribution to Accredited Investors only. This presentation is NOT for public disclosure. The contents of this presentation have not been reviewed by a Qualified Person as defined by National Instrument 43-101.

CMC Metals Ltd. – Who We Are

- TSX-V: CMB
 - 49.1M Shares Issued (February 20, 2020)
 - Formed June 21, 1996
 - Headquarters: Vancouver, BC, Canada
- Board of Directors
 - Chairman: Michael Scholz
 - President, CEO and Director (CMC Metals Ltd and 0877887 BC Ltd.): Kevin Brewer
 - Corporate Secretary, Director: Graham Chisholm
 - Other Directors with broad base of experience in financial markets, government relations, and project development

CMC Metals – Our Key Assets

Assets

1. Logjam Property, Yukon
2. Bishop Mill, California
3. Silver Hart Property, Yukon – The “flagship” property

100 tpd gold processing mill – Bishop, California

Current seeking opportunities for toll processing



Mill Components



- Primary/secondary crusher
- Mills
- Rake classifier
- Flotation cells
- Filtering system
- Electrolytic winning system

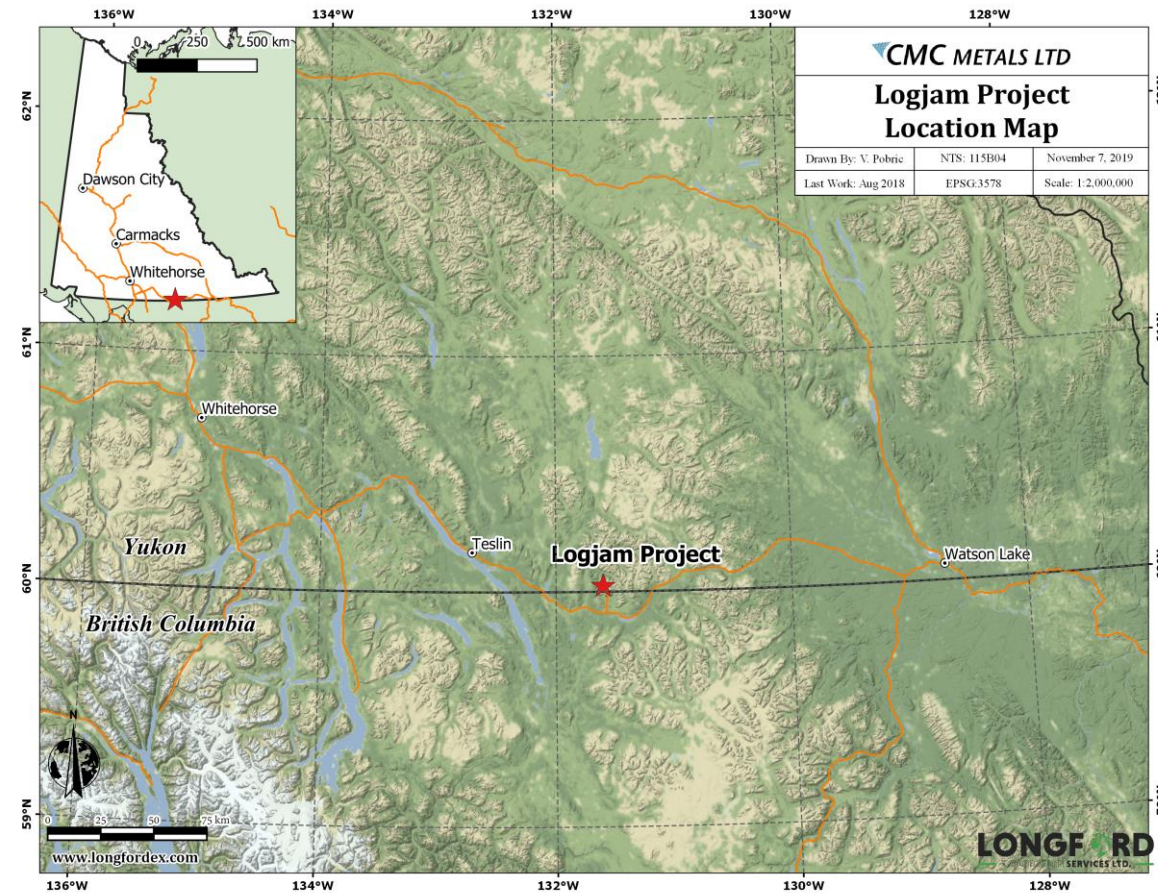
Other Key Facilities – Bishop Mill

Waste Management Unit



- Double lined leachate pad with Leachate collection and recovery system suitable for 500,000 cubic feet of tailings (32,000 tons) and 5 year processing life at a rate of 100 ton per day
- Mechanical building
- Electrical building with power lines
- Assay and quality control lab
- Production well
- Office and site security facilities
- Pot furnace
- Ore pad

Logjam Project - Location



Logjam – Site Access



Logjam Valley, Camp and Deposit



Adit Development – 5150 and 5600 Levels



- 701 meters of underground development in two adits
- 2020 exploration will evaluate the operational and safety requirements for underground drilling from the 5150 level portal

Underground Mineralization



- 30 cm wide carbonate vein in drift with significant alteration in hanging wall
- Potential identified from previous underground sampling for expansion of resources within the altered sediments
- Extent of known veins poorly explored to date and merits detailed examination
- Best recent underground sample provided 49.6 g/t silver, 4,137 g/t lead, 6,350 g/t zinc and 414 g/t copper

Logjam - Underground sample



Assay Result - 1319606

Silver: 49.6 g/t

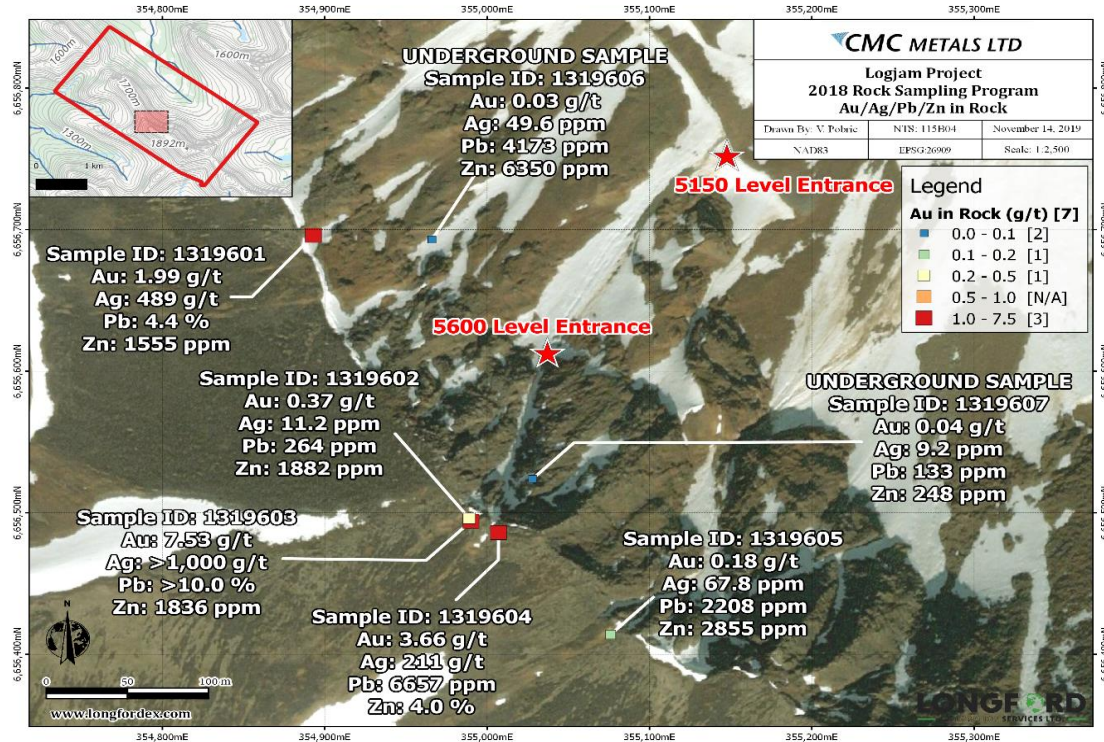
Lead: 4,173 g/t

Zinc: 6,350 g/t

Copper: 414 g/t

30 cm carbonate vein in drift

High Grade Grabs Identified at Logjam



- Grab samples from a one-day reconnaissance sampling provided several high-grade results with a best grab of 7.53 g/t gold, 1,000 g/t silver, 10% lead, 1,836 g/t zinc, 2,000 g/t stibnite and 6,673 g/t copper.
- Identified several highly anomalous areas that are yet to be explored and will be examined in 2020 and beyond

Logjam – Grab Sample



Assay Result - 1319603

Gold: 7.53 g/t

Silver: 1000 g/t

Lead: >10%

Zinc: 1,836 g/t

Carbonate vein with abundant
galena

Logjam – Grab Sample



Assay Result - 1319601

Gold: 1.99 g/t

Silver: 489 g/t

Lead: 4.4%

Zinc: 1,555 g/t

Silicified and brecciated vein

Logjam – Grab Sample



Assay Result - 1319604

Gold: 3.66 g/t

Silver: 211 g/t

Lead: 6,657 g/t

Zinc: 4%

Strongly oxidized carbonate vein

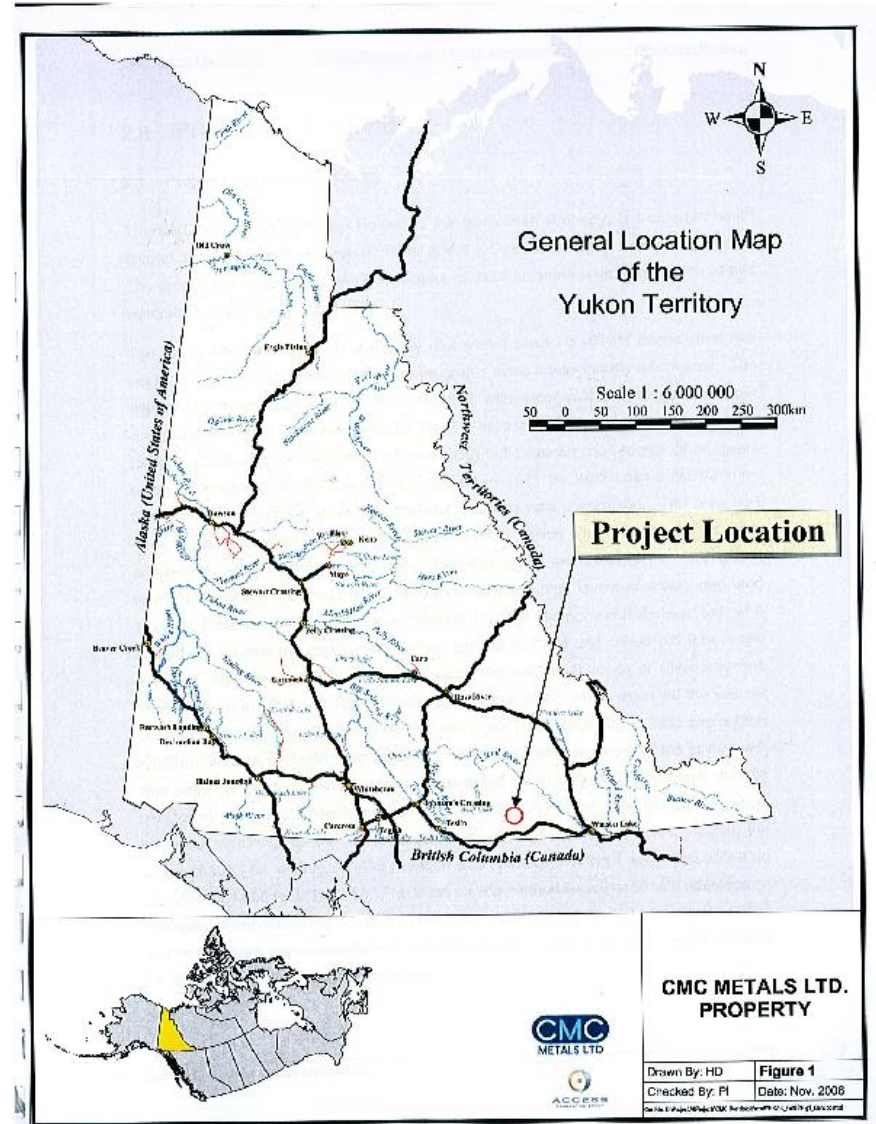
Logjam – Exploration Summary

- 2,971 meters of drilling
- Historical non-compliant 43-101 resource of **70,144 tonnes grading 3.02 g/t gold, 392.2 g/t silver and 2-3% lead and zinc** between the two adit levels
- New anomalous areas identified
- Never been subjected to modern exploration techniques
- VERY UNDEREXPLORED

Logjam – Significant Potential

Logjam has the potential
to be a significant high
grade polymetallic
deposit

Silver Hart – Location and Access



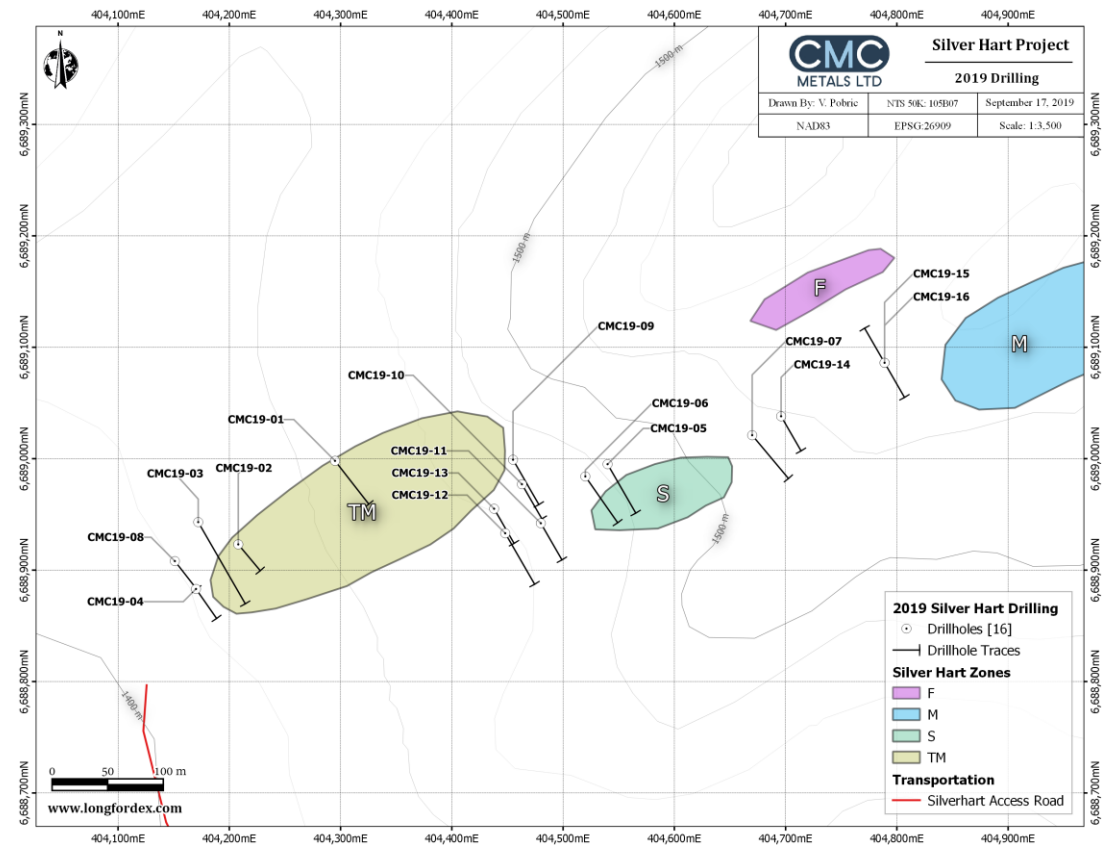
Ore Testing and Marketing

Upgrading of the access road in 2020 is critical to facilitate up to a 10,000 ton bulk sample to be marketed and tested and subsequent ore haulage from near term open pit mine development.

- Bridge repairs
- Bridge installation
- Culvert installations
- Other upgrades, as required

2019 Drilling Program

- 1,048 meters in 16 holes with a Focus on the TM and S zones within the Main Zone
- A best drill intersection in the S subzone of the Main Zone comprising of **5.5 meters grading 1,139 g/t silver, 11.38% lead and 8.61% zinc** from 37.5-43.0 meters; and,
- A best drill intersection in the TM subzone of the Main Zone comprising of **11.7 meters grading 993.7 g/t silver, 4% lead and 9.6% zinc** from 38.25-49.95 meters.



S Zone – Intersection



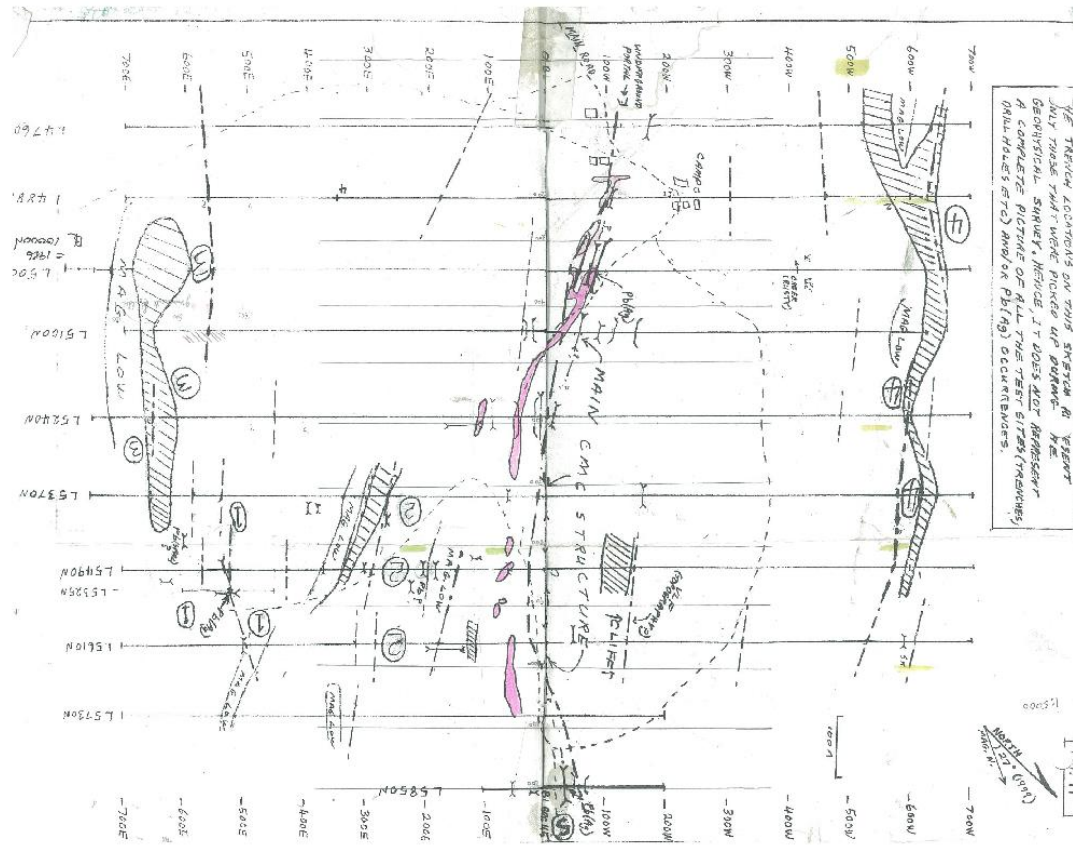
- Picture of core from 57.0 – 69.3 meters including the intersection from 61.95 meters to 66.25 meters of **4.3 meters** grading **1,257.2 g/t silver, 4.25% lead and 13.48% zinc.**

S Zone - Intersection



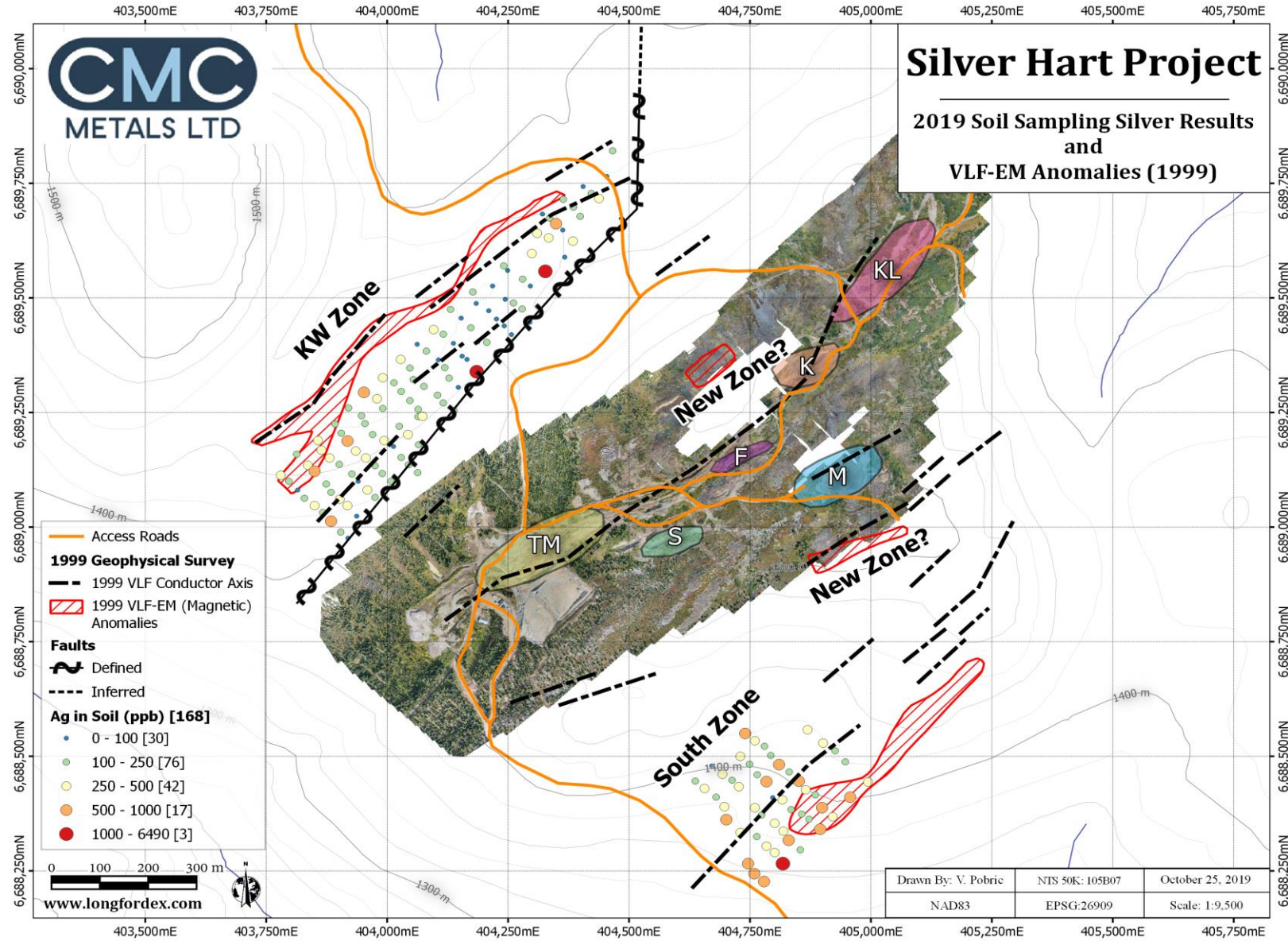
- Hole 19-06, boxes 7-9, 32.5-44.65 meters including an intersection at 37.5 – 43.0 meters of **5.5 meters grading 1,139.9 g/t silver, 11.38% lead and 8.61% zinc.**

1999 VLF-EM Survey



- In 2019 follow-up of the 1999 VLF-EM survey using geochemical soil sampling served to identify two new potential zones with significant areal extent and two new potential sub-zones in the Main Zone that will be further explored through trenching and additional soil sampling in 2020

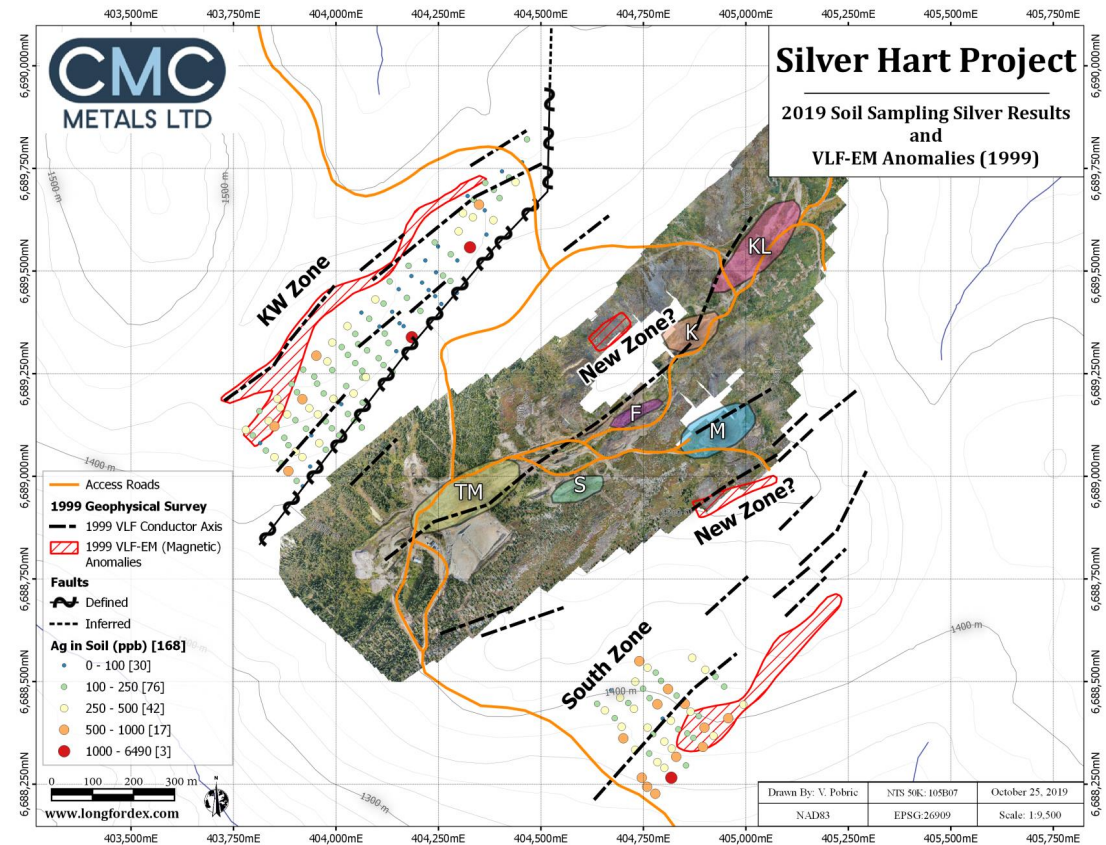
Soil Sampling Identified 2 new zones – KW and South and 2 sub-zones in the Main Zone



Key Highlights – KW Zone

- KW Zone

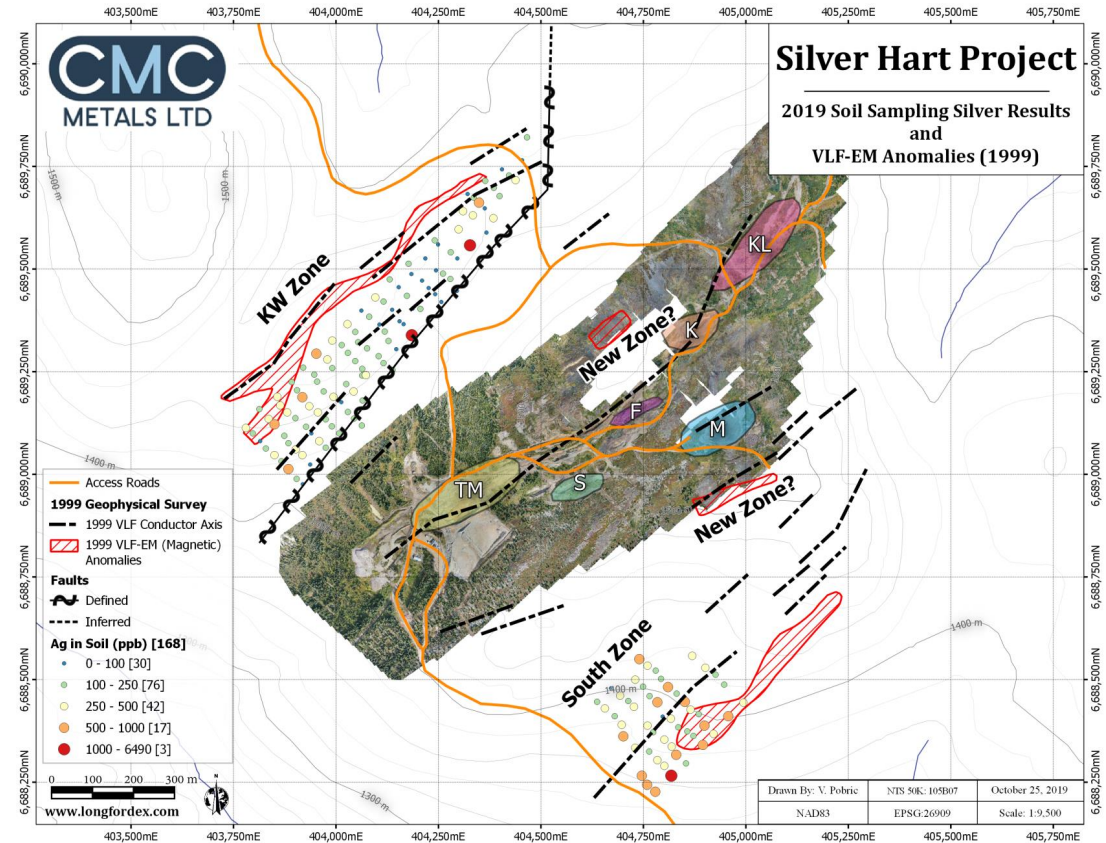
- Over 1 km in strike length, 250 m in width and open to northwest and south
- 7 samples anomalous in silver: best samples 1,019 and 1,360 ppb
- 2 samples anomalous in zinc: best 357.7 ppm
- 3 samples anomalous in lead 173.2 ppm
- Galena mineralization found in outcrop in northern part of zone
- Coincident with VLF-EM
- Likely associated with fault and contact between sediments and volcanics



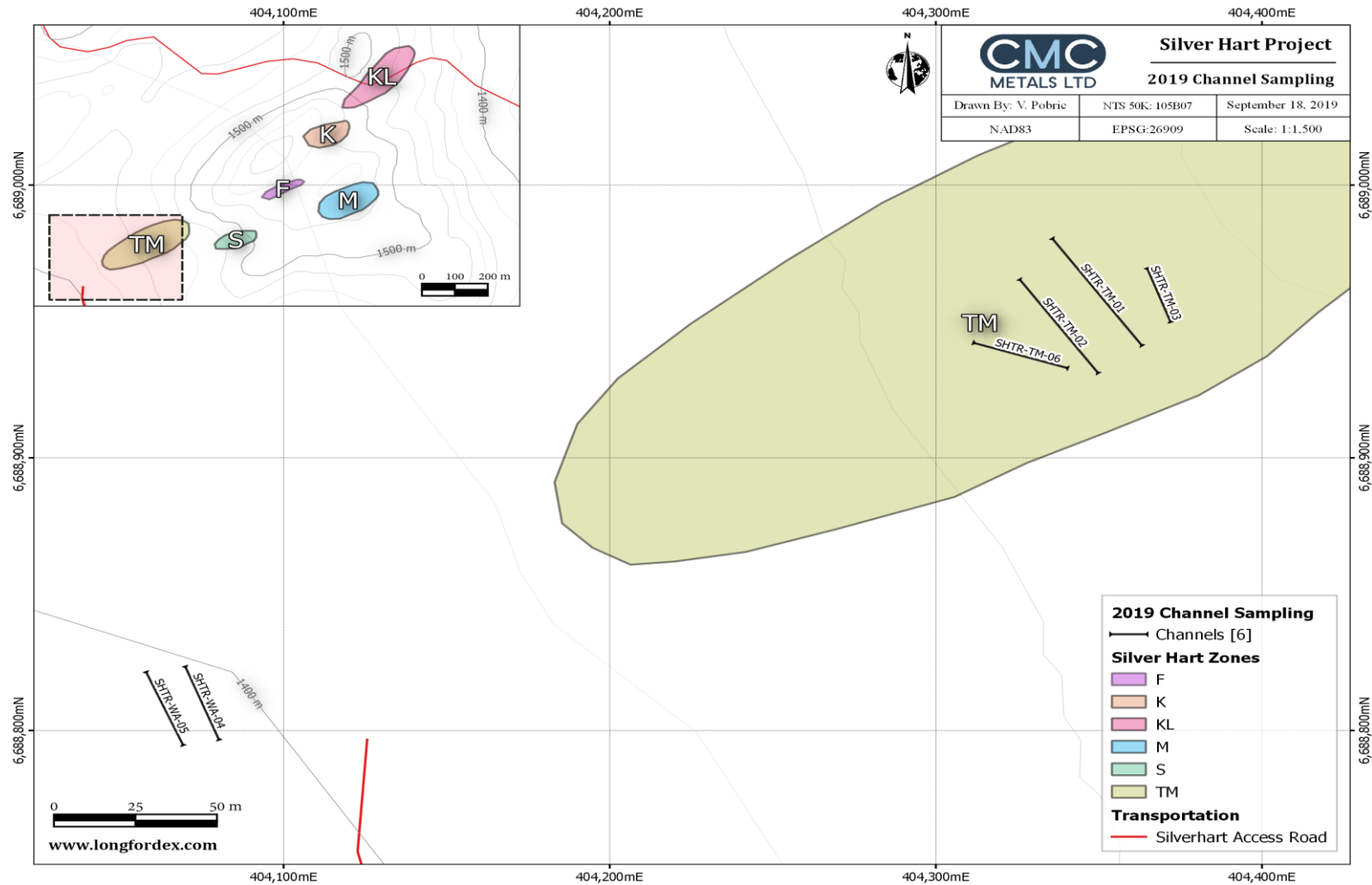
Key Highlights – South Zone

- South Zone

- Over 400 m in strike length, 350 meters in width and open to northeast and south
- 13 samples anomalous in silver: best sample 6,490 ppb Ag, 528.1 ppm Zn and 427.5 ppm Pb
- 15 samples anomalous in zinc: best 533.2 ppm
- 4 samples anomalous in lead 427.5 ppm
- Coincident with VLF-EM
- Rusty sediments in outcrop



Channel and Trench Sampling – TM Development Pit

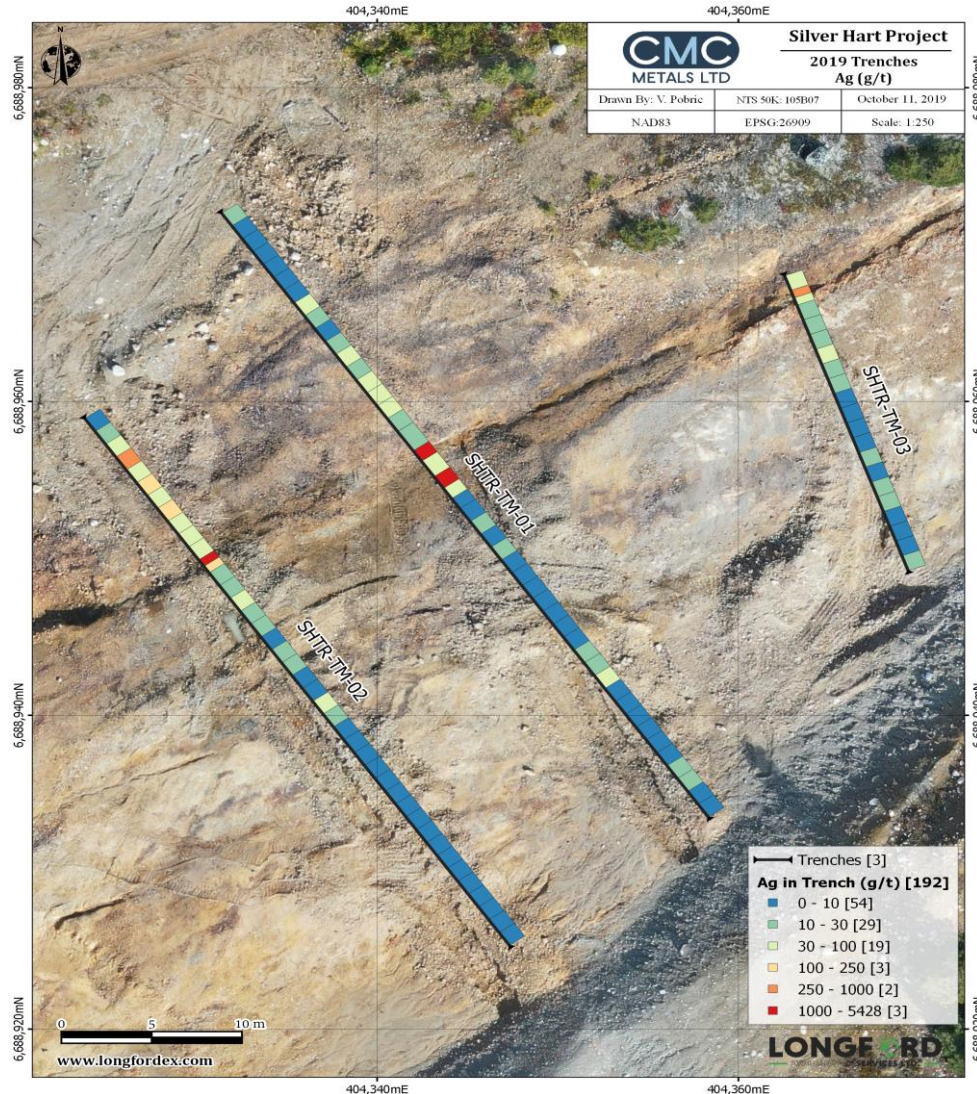


Channel Sampling



Trenching in the Main Zone has identified significant potential to Expand the resource base

- Key Point: Mineralization is of greater potential width than previously thought and extends into both the hanging wall and footwall in the Main Zone**



Trench Results TM Pit - Main Zone

Trench	Length	Silver	Lead	Zinc
1	10.2m	501.4g/t	6.34%	0.40%
2	10.5m	898.4g/t	0.97%	0.29%
3	2m	537g/t	0.42%	0.18%
4	15m	366.9g/t	16.47%	13.15%

Sampling of the “waste” pile has identified the potential for ore grade material



Channel sampling produced impressive results in the Waste Pile

60 meters graded 565 g/t silver and 4.59% zinc, including 22 meters with lead values ranging from 2 - 19.09%

Goal - 2020: Test pitting to be conducted in 2020 over remainder of “waste” area to determine tonnage, grade and material volume.

With positive results material will be bulk sampled and shipped to market

Future Milestones

Silver Hart

- Test pit waste pile and prepare for market – 2020
- Prepare and transport bulk sample to market – 2020
- Data integration and detailed examination of new zones - 2020
- Upgrading of access road – 2020-21
- Preparation of development plan for open pit mine – 2020-21
- Update resource estimate - 2021

Logjam

- Evaluate most effective exploration methods – 2020
- Geophysics and drilling - 2021

TSX-V: CMB

- A strategy focused on Silver Hart:
 - Establish open pit mine development in the short term
 - Expanding the resource base through evaluation of the potential for additional resources at depth, expansion and further evaluation of existing zones, and detailed evaluation of potential zones and the property at large
 - Generating revenues from bulk sampling to help finance exploration activities reducing share dilution