



CANADA
SILVER
COBALT

High-Grade and Technology
Leader in Northern Ontario's
Prolific Silver-Cobalt District

TSXV: CCW | OTC: CCWOF

JULY 21 , 2020

GRADE IS KING!

CASTLE EAST HIGH-GRADE SILVER DISCOVERY!

- The right address! (75 km from Kirkland Lake in prolific Northern Ontario)
- Top-tier SILVER and COBALT grades with maiden Inferred resource
- Strong resource expansion potential
- Aggressive drill program in progress
- “Dream Team” to build out discovery
- Powerful new SILVER bull market is still in its early stages

Matt Halliday, P.Geo., CCW President, Chief Operating Officer and VP-Exploration, came to Canada Silver Cobalt from Kirkland Lake Gold where he served as resource geologist.

- Vertically integrated leader of Canada's SILVER-COBALT heartland
- Strategically positioned to capitalize on SILVER-GOLD bull market and the “green energy” trend including increasing demand this decade for ethically-sourced COBALT
- Halliday is expanding a team with many decades of combined successful experience in this prolific region of Northern Ontario including Frank Basa, Doug Robinson, Jacques Monette, Merouane Rachidi, Claude Duplessis, geophysicist Jules Lajoie, Marc Bamber, and First Nations expert Dianne Tookenay





HIGH-GRADE AND TECHNOLOGY LEADER
IN NORTHERN ONTARIO'S PROLIFIC
SILVER-COBALT DISTRICT!



TSXV: CCW | OTC: CCWOF

- Powerful, expanded team with fresh leadership and energy to take CCW to next level
- Second drill rig added to Castle East
- Maiden resource estimate featuring global leading grades
- Planned 50,000-m 2020 program concurrent with advancement of permitting process leading to ramp construction in 2021 to access the rich Robinson zone and create a major new underground exploration platform
- This is the biggest SILVER-focused program in the district since Agnico Eagle in the late 1970's/early 1980's when it made a new discovery at the Castle mine and brought that mine back into production for a decade until SILVER prices collapsed

LOCATION, GRADE, SCALE POTENTIAL

CCW owns the past producing Castle Mine and the largest land package (78 sq. km) of any publicly traded company in the broader Gowganda SILVER Camp (75 km southwest of Kirkland Lake)

Historical district production comprising very high-grade SILVER was approximately 70 million ounces in addition to 300,000 pounds of COBALT, but this came from only a fraction of the Nipissing diabase which thickens and dips to the very underexplored southeast



Castle East High-Grade Silver Discovery Gowganda Camp, Miller Lake Basin

Just a small fraction of Castle East has been drilled to date

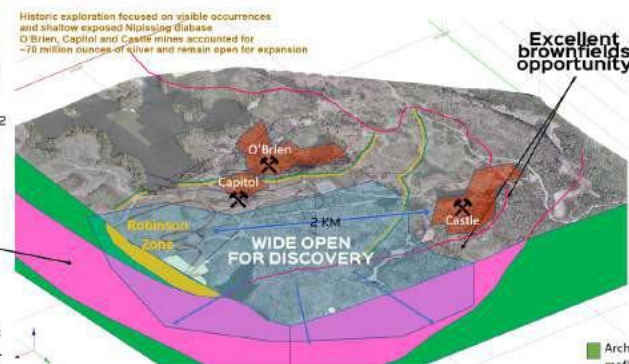
Robinson Discovery Zone
Hits up to **70,380 g/t Ag (2,053 oz/ton)** over 0.3m within 4m of **7,259 g/t (212 oz/ton)** in CA-19-08-02 (50% to 70% true width)

Historic exploration focused on visible occurrences and shallow exposed Nipissing Diabase. O'Brien, Capitol and Castle mines accounted for ~70 million ounces of silver and remain open for expansion

Excellent brownfields opportunity

Thick unexposed Nipissing horizon, thickening to centre of basin, large volume to explore

Maiden Inferred Resource (refer to May 28, 2020 NR):
Zones 1A and 1B in the Robinson Zone have an average silver grade of 8,582 g/t (259 oz/ton) in a combined 27,400 tonnes of material for a total of 7.58 million Inferred ounces using a cut-off grade of 259 g/t silver equivalent (mineral resources that are not mineral reserves do not have demonstrated economic viability)



Drilling Ramps Up At Castle East

June 30, 2020 News: Canada Silver Cobalt appoints Matt Halliday, current VP-Exploration and former Kirkland Lake Gold resource geologist, as President & Chief Operating Officer as CCW prepares to add a second drill rig to further build out the growing Castle East discovery.

TSXV:
CCW

OTC:
CCWOF

Qualified Person:
The technical information contained herein was reviewed and approved by Mr. Mesutur Rachidi, Ph.D., P.Eng., (A.P.G.C., A.P.E.O.N. and O.G.C.) of GoldMinds Geoservices, a Qualified Person in accordance with National Instrument 43-101

Archean – mostly mafic volcanic
Huronian Sediment
Nipissing Diabase

June 30, 2020



HIGH-GRADE AND TECHNOLOGY LEADER
IN NORTHERN ONTARIO'S PROLIFIC
SILVER-COBALT DISTRICT!



TSXV: CCW | OTC: CCWOF

ROBINSON ZONE MAIDEN INFERRED RESOURCE

Notably, Zones 1A and 1B of the Robinson Zone have an average SILVER grade of 8,582 g/t (250.2 oz/ton) in a combined 27,400 tonnes of material for a total of 7,560,200 Inferred ounces using a cut-off grade of 258 g/t AgEq

Mineral Resource Estimate at Castle East Using a Cut-Off Grade of 258 AgEq g/t

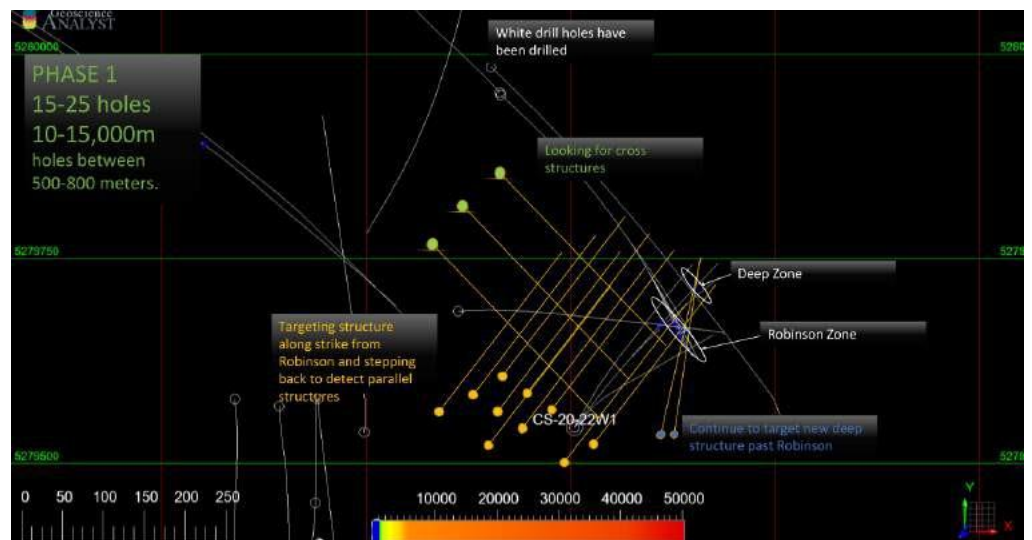
Inferred Mineral Resources	Ag g/t	Co g/t	Cu g/t	Ni g/t	Pb g/t	Zn g/t	AgEq g/t	Tonnes	Ag Oz.	AgEq Oz.
Zone 1A	7,960	946	349	790	16	12	8,042	8,100	2,073,000	2,094,200
Zone 1B	8,843	2,308	325	336	30	52	8,998	19,300	5,487,200	5,583,200
Zone 2A	38	5,673	2,101	453	118	108	426	5,500	6,800	75,300
Total Inferred Mineral Resources	7,149	2,537	628	467	41	52	7,325	32,900	7,567,000	7,752,700

Note: Mineral Resource estimate was independently prepared by Gold Minds Geoservices Inc. in accordance with National Instrument 43 - 101 ("NI 43-101") and is dated May 28, 2020. CCW cautions that mineral resources which are not mineral reserves do not have demonstrated economic viability.

THE NEXT
10,000 METERS
OF PHASE 1
DRILL PROGRAM



TSXV:CCW | OTC:CCWOF





HIGH-GRADE AND TECHNOLOGY LEADER
IN NORTHERN ONTARIO'S PROLIFIC
SILVER-COBALT DISTRICT!

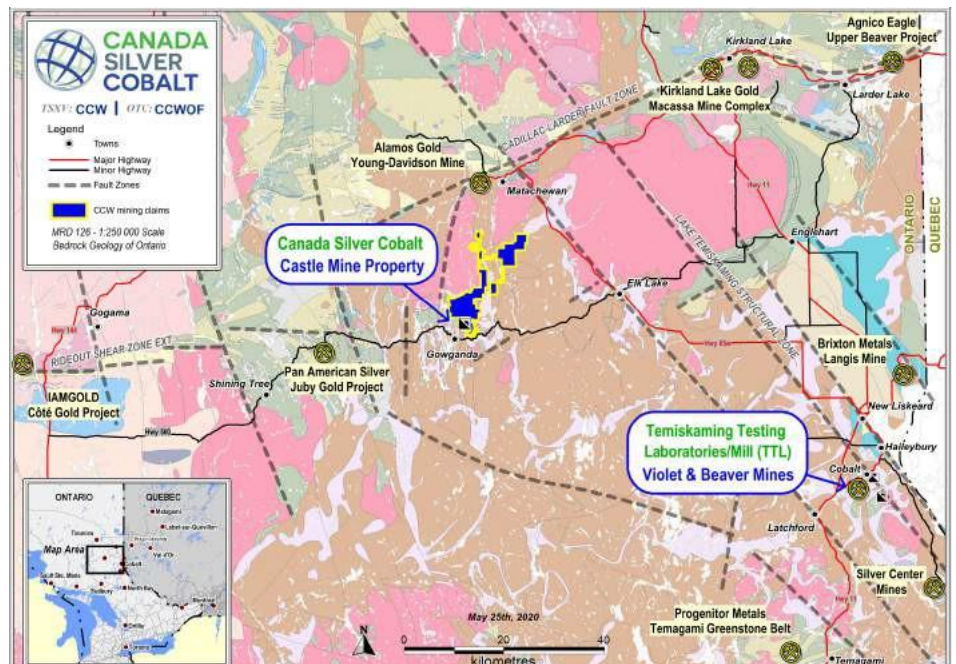


TSXV:CCW | OTC:CCWOF

- CCW owns the only facility in the Northern Ontario SILVER-COBALT District - Temiskaming Laboratories (TTL) - that combines bullion pouring, bulk sampling, commercial assaying and e-waste processing
- Multiple potential revenue streams beginning in 2020 as the SILVER-GOLD bull market intensifies



TTL – LESS THAN
A 90 - MINUTE
DRIVE FROM
CCW'S CASTLE
MINE AND
PROPERTY !





HIGH-GRADE AND TECHNOLOGY LEADER
IN NORTHERN ONTARIO'S PROLIFIC
SILVER-COBALT DISTRICT!



TSXV:CCW | OTC:CCWOF

CASTLE MINE

The Only Permitted And Active Underground Asset In The Entire Northern Ontario
SILVER-COBALT District

- The refurbished first level of Castle (11 levels in total) extends 365 meters east-west and 360 meters north-south, and the shaft remains in excellent condition
- Strong potential exists for the discovery of new zones while the company is also focused on the mine's SILVER-rich historic tailings
- ◆ Castle was mined intermittently throughout the last century for its exceptionally high-grade Silver
- ◆ Mining operations ended around 1990 due to a collapse in SILVER prices
- ◆ In 2018, CCW became the first junior mining company in North America to produce a battery grade COBALT sulphate product (22.6% COBALT sulphate hexahydrate) from its own mineralized material at the Castle mine
- ◆ CCW now has "proof of concept" for an environmentally green process that efficiently recovers COBALT and other metals while successfully removing arsenic
- ◆ CCW's proprietary **RE-2OX Process** is scalable and the project will benefit from being hosted at the company's newly-acquired TTL lab/processing facility in the town of Cobalt
- ◆ CCW's Beaver mine on patented ground near the town of Cobalt, just minutes from TTL, was a significant past SILVER producer and will be advanced during 2020





HIGH-GRADE AND TECHNOLOGY LEADER
IN NORTHERN ONTARIO'S PROLIFIC
SILVER-COBALT DISTRICT!



TSXV: CCW | OTC: CCWOF

CANADA SILVER COBALT SHARE STRUCTURE AS OF JULY 21, 2020

Share Structure as of July 21, 2020

CANADA SILVER COBALT WORKS INC.	
Issued & Outstanding	98,847,488
Stock Options Outstanding	9,038,000
Warrants Outstanding	8,244,830
Fully Diluted	116,130,318

For further information, please contact:

Matt Halliday
President, COO & VP-Exploration
(514) 708-7390

Qualified Person:

The technical information in this presentation was reviewed and approved by Mr. Merouane Rachidi, Ph.D, P.Geo., (PGO, OGQ, APEGNB and AIPG) of GoldMinds Geoservices, an independent qualified person in accordance with NI-43-101.

Disclaimer:

Neither the TSX Venture Exchange nor its Regulation Service Provider (as that term is defined in the policies of the TSX Venture Exchange) accepts responsibility for the adequacy or accuracy of this material. This presentation may contain forward-looking statements including but not limited to comments regarding the timing and content of upcoming work programs, geological interpretations, receipt of property titles, potential mineral recovery processes, etc. Forward-looking statements address future events and conditions and therefore, involve inherent risks and uncertainties. Actual results may differ materially from those currently anticipated in such statements.